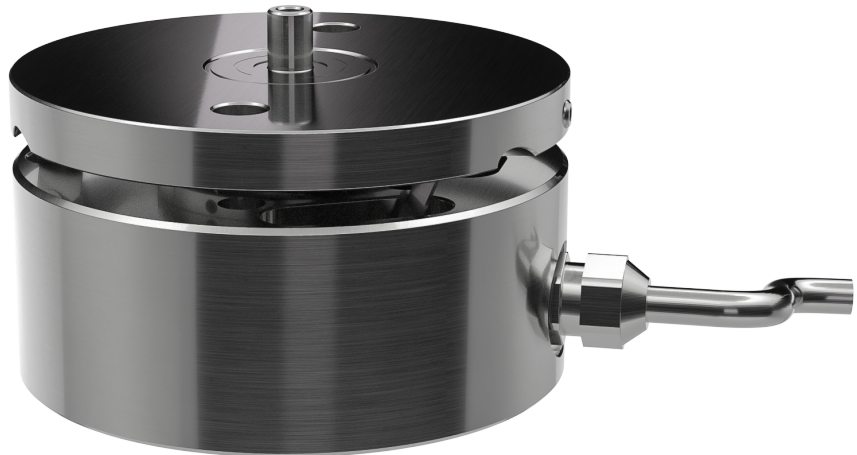


Circular Vibratory Drive - Fine Line « CVF »



CVF-100-F1

The advantages of our product:

- Compact design
- This vibratory circular drive is optimal for very small, thin and micro parts
- Thanks to piezo technology, higher feed rates than conventional vibratory round drives.
- Finest piezoelectric vibration characteristics with amplitude range from 4 to 8 μ m.
- Very easy mounting, top and bottom mounting possibilities by screwing
- Standard size compatible and interchangeable with vibratory circular drives CVC.100
- Conveying direction: clockwise (CW) or counterclockwise (CCW)

Key data:

- Height: 55mm
- Diameter: 100 mm
- Electrical connection: 230V/50Hz
- Special versions 110V/60Hz on request

Technical specifications:

Features for standard design	Typ	CVF-F1				
	Unit	100				
Weight	Kg	2.40				
Payload max.	Kg	0.35				
Current absorbed	A	0.20				
Vibrating solenoids	Pcs	8				
Spring blades	Pcs	4				
Noise emission	dB		< 70		< 75	
Electr. version (CH+EU)	V / HZ		230V / 50Hz			
Electr. version (US)*	V / HZ		110V / 60Hz			
Temperature ambient	°C		+10 bis +45			
Protection class	IP		40			

Options and accessories:

- Vibration drive controller
- Hopper system with level monitoring
- Functional feeding module with sorting, linear rail, and separation system
- Special electrical version (US), 110V/60Hz*

Article no. ID:

CVC	-	100	-	F1	CW / CCW
-----	---	-----	---	----	----------

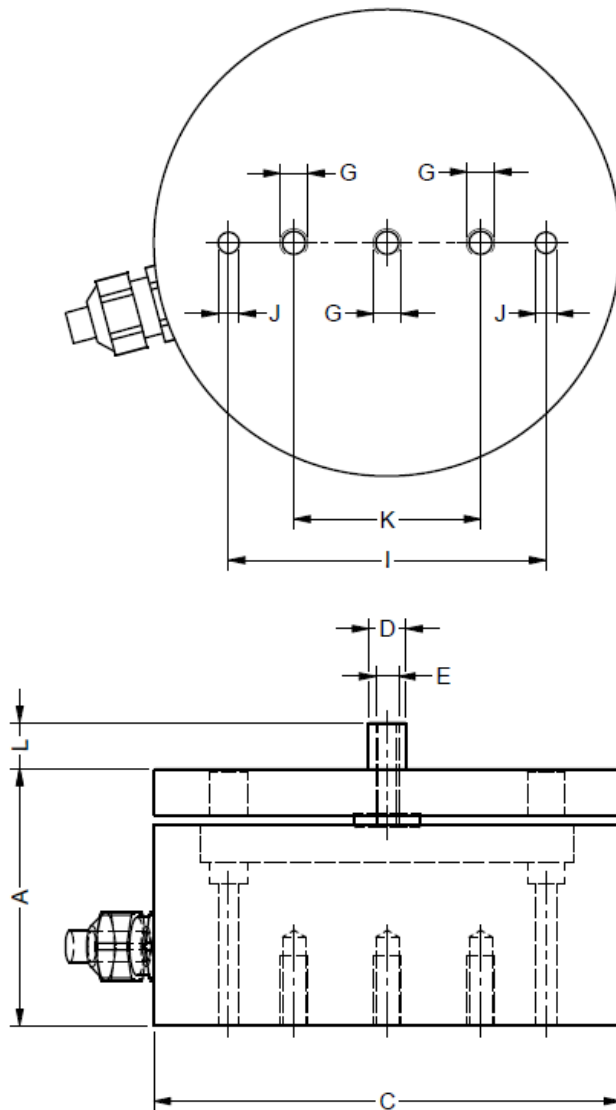
CW: Clockwise
CCW: Counter-Clockwise

Typ: F1

Size: Outer diameter (mm)

CVF: Circular Vibratory Drive - Fine line

Dimensions:



Article no. ID	Rotation direction	Dimensions (in mm)											
		A	B	C	D	E	F	G	H	I	J	K	L
CVF-100-F1-CW	CW	55	-	100	8	M5	-	M6	-	68	4.5	40	10
CVF-100-F1-CCW	CCW												

CW: clockwise, CCW: counterclockwise